



INDOOROOPILLY
GOLF CLUB

GREEN LOOP PROJECT





INDOOROOPILLY
GOLF CLUB



- Legend**
- Tees
 - Fairway
 - Green
 - Bunker
 - Lakes
 - Cart Path
 - Car Park
 - Buildings
 - Wetland
 - Landscape Trees
 - Broken Ground
 - Stage 1 Outline

PROPOSED SCORECARDS
(all distances are shown in metres)

RED COURSE						GOLD COURSE					
Hole	Par	Black	Blue	White	Red	Hole	Par	Black	Blue	White	Red
1	5	590	555	460	435	1	4	380	375	365	315
2	4	405	390	375	325	2	4	400	380	365	315
3	4	380	360	345	335	3	5	530	520	495	455
4	3	130	160	150	125	4	3	170	195	125	115
5	4	440	420	385	325	5	4	170	160	365	295
6	2	540	525	310	285	6	4	400	385	370	335
7	3	180	170	155	125	7	5	515	500	475	400
8	4	370	350	335	280	8	3	340	140	135	125
9	1	200	225	430	340	9	4	180	150	290	250
Total	36	3325	3125	2995	2635	Total	36	3255	3095	2915	2620

BLUE COURSE						GREEN COURSE					
Hole	Par	Black	Blue	White	Red	Hole	Par	Black	Blue	White	Red
1	4	380	380	330	245	1	4	380	375	365	310
2	3	195	175	150	130	2	4	370	355	340	300
3	5	530	505	460	420	3	3	175	140	175	125
4	2	200	155	140	130	4	5	520	525	485	430
5	5	530	505	460	430	5	4	330	280	280	230
6	4	415	390	375	325	6	5	495	455	425	385
7	4	290	280	300	285	7	4	330	375	365	340
8	3	140	135	130	120	8	3	170	150	125	120
9	4	400	380	365	330	9	4	390	375	340	330
Total	36	3110	2845	2790	2485	Total	36	3135	3020	2890	2640



INDOOROOPILLY GOLF CLUB - COURSE REDEVELOPMENT

Revised Masterplan - August 2021

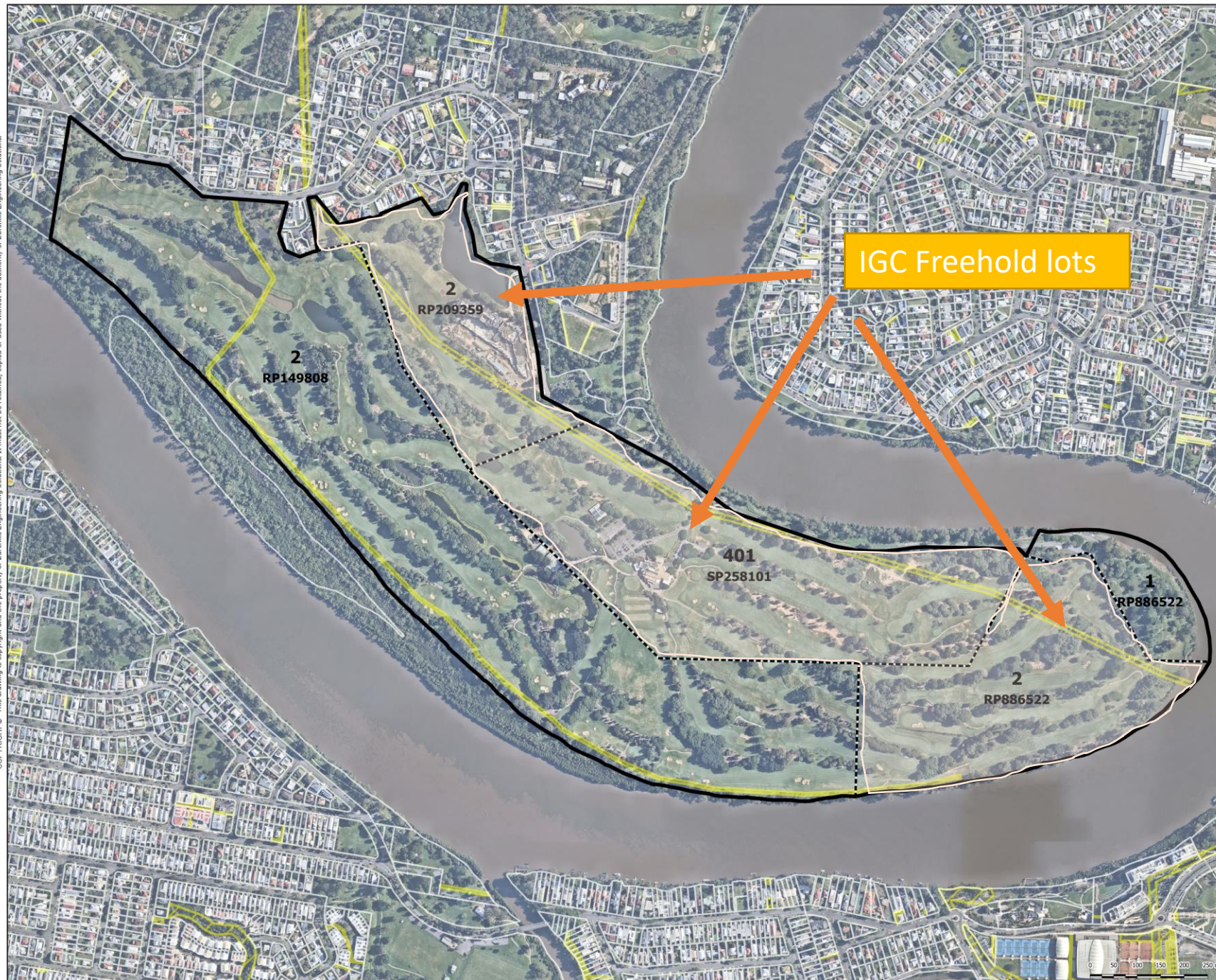
PW-01B2

1:7500 @ A3



Plot Date 2021-17-12

COPYRIGHT © This drawing is copyright and the property of Burchills Engineering Solutions. It must not be retained, copied or used without the authority of Burchills Engineering Solutions.



Indooroopilly Golf Club

Aerial Imagery - Current Golf Course Layout



Location of the site within the Brisbane City LGA

Legend

- Site Location
- Internal Lot Boundaries
- Easements

Project: BE190133

Date: 29-03-2021

Scale: 1:7,500 at A3

Projection: GDA 94/MGA Zone 56

Data Sources: Queensland Department of Natural Resources, Mines and Energy (2020), Brisbane City Council (2020), Nearmap (05 March 2021).



DISCLAIMER: This figure and its contents are electronically generated, are confidential and may only be used for the purpose for which they were intended. Burchills Engineering Solutions will not accept responsibility for any consequences arising from the use of the figure for other than its intended purpose or where the drawing has been altered, amended or changed either manually or electronically by any third party. Some or all of the data presented on this plan may have been digitised or sourced from third parties, and as such may contain spatial inaccuracies.



Location of the site within the Brisbane City LGA

Legend

-  Site Location
-  Habitat Trees
-  Vegetation Association A - Open Forest and Woodland Landscape Mosaic
-  Vegetation Association B - Qld Blue Gum Riparian Open Forest (RE 12.3.16)
-  Vegetation Association C - Mangrove Fringing Open Forest to Woodland (RE 12.1.3)
-  Vegetation Association D - Regrowth Mangrove Shrubland
-  Vegetation Association E - Waterbodies and Fringing Sedgeland
-  Bare Turf/Modified Areas

Project: BE190133

Date: 19/12/2021

Scale: 1:7,500 at A3

Projection: GDA 94/MGA Zone 56

IGC Green Loop project

Removal and replacement trees summary

253 trees being removed

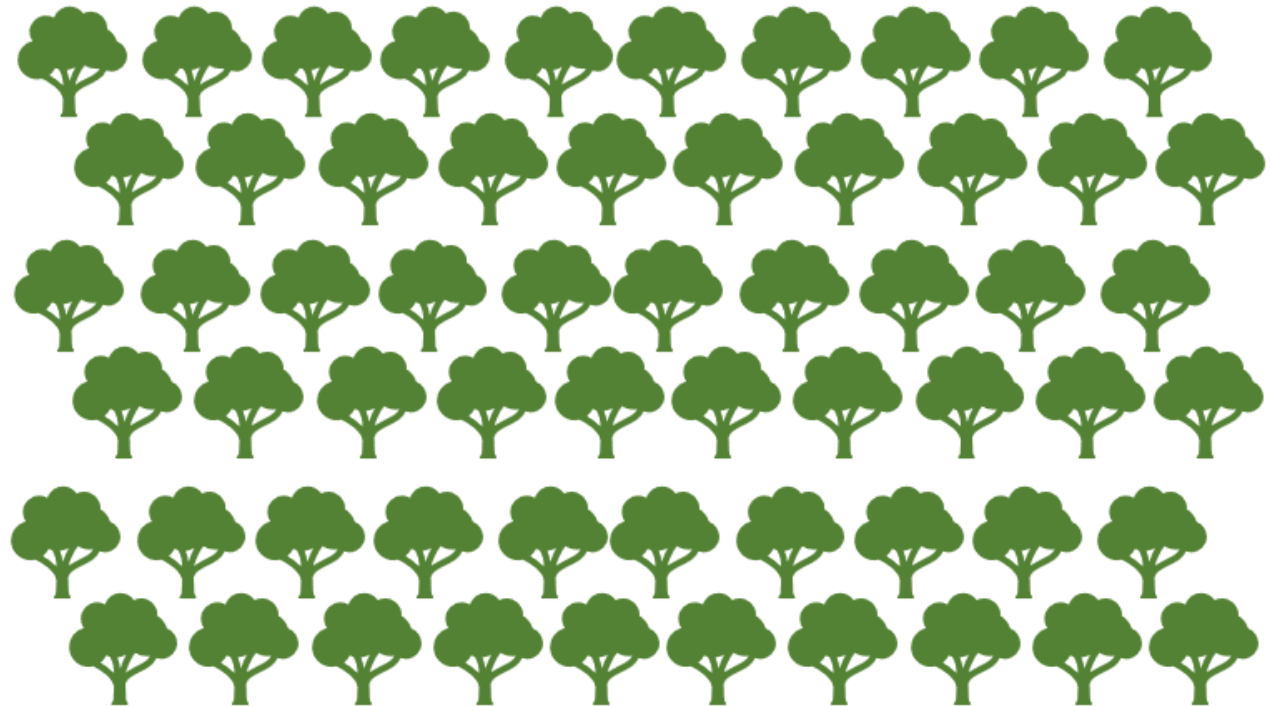
Of 1010 existing trees



4,762 m² of canopy area being removed

2,930 trees being planted

And 757 existing trees retained



at least 6000 m² of canopy cover replaced within 3 years and 72,000 m² total forecast at maturity



Current Tree Cover 2022



Removal of 253 trees including 105 weeds



Green Loop Landscape Works 2930 new trees

- Natural history – context

1946



1973





INDOOROOPILLY
GOLF CLUB

Natural History

Reciprocal Clubs

Board and Management

Rules and Regulations

Heritage

[Indooroopilly Golf Club Natural History \(Version 2\)](#)

Icon, Honorary and Life Members

BOOK PUBLIC TEE TIMES

ENEWS SIGN UP



Indooroopilly Golf Club Natural History (Version 2)

The Natural History of Indooroopilly Golf Club – Version 2

David Hassall and John Walthall, February 2021

Introduction

The story of our Natural History has been one of exciting discovery for all of us. The more we look, the more we find! **Version 1** included lists of 392 species and varieties of Flora, Fauna and Fungi, with illustrations of more than 100 of these. Now, thanks to significant help from other generous and well-informed members (see Acknowledgements below), **Version 2** includes an observed increase of approximately 67%! The new total of 681 species and varieties comprises 493 plants, 165 Animals and 23 fungi. More than 570 of these are now illustrated.