



Black Bean (*Castanospermum australe*) A small group of trees behind the Red 3 green, with flower close-up below.





Broad-leaved Fig (*Ficus platypoda*) A small group of trees on RHS Green 4 fairway, with fruit and leaves close-up below.





Cadaghi (*Corymbia torelliana*) A small group of trees on RHS Green 1 fairway, with flowers close-up below.





Candlenut Tree (*Aleurites moluccanus*) A small group of three trees on LHS Gold 7 fairway, with flowers and young fruits close-up below.

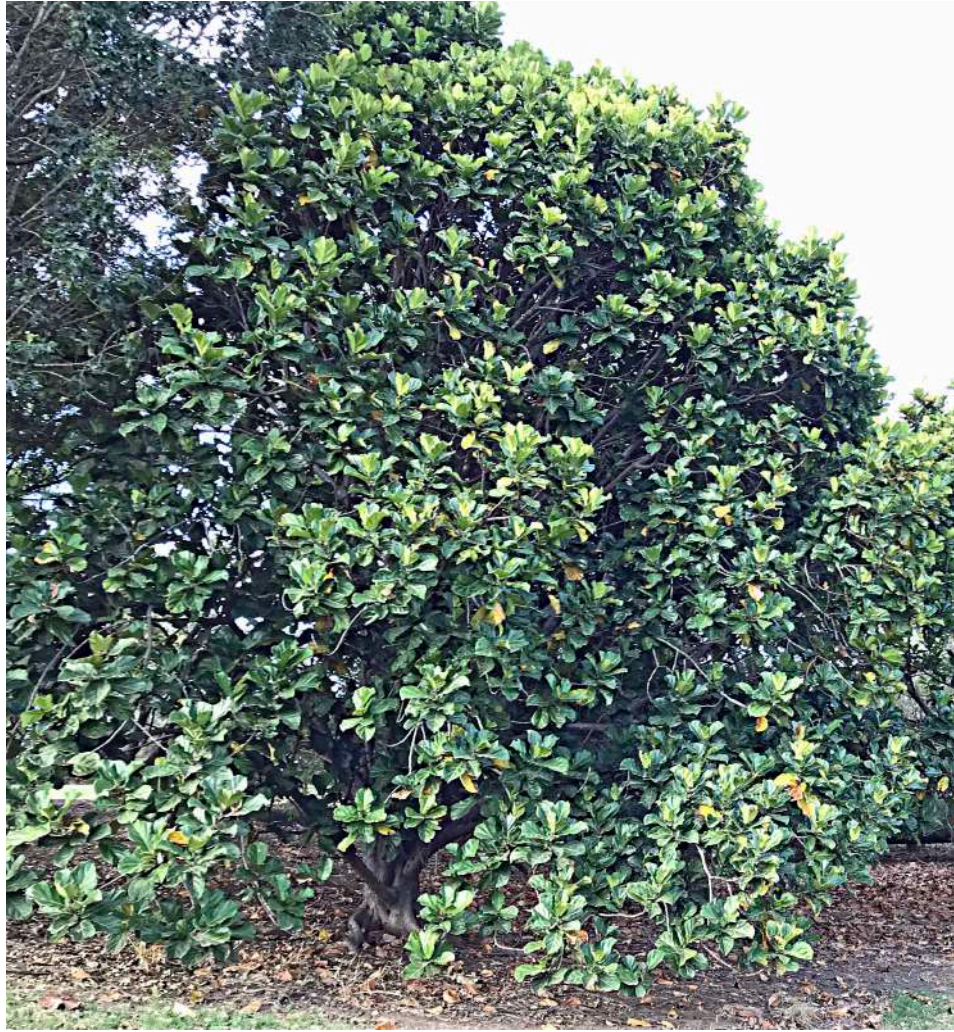




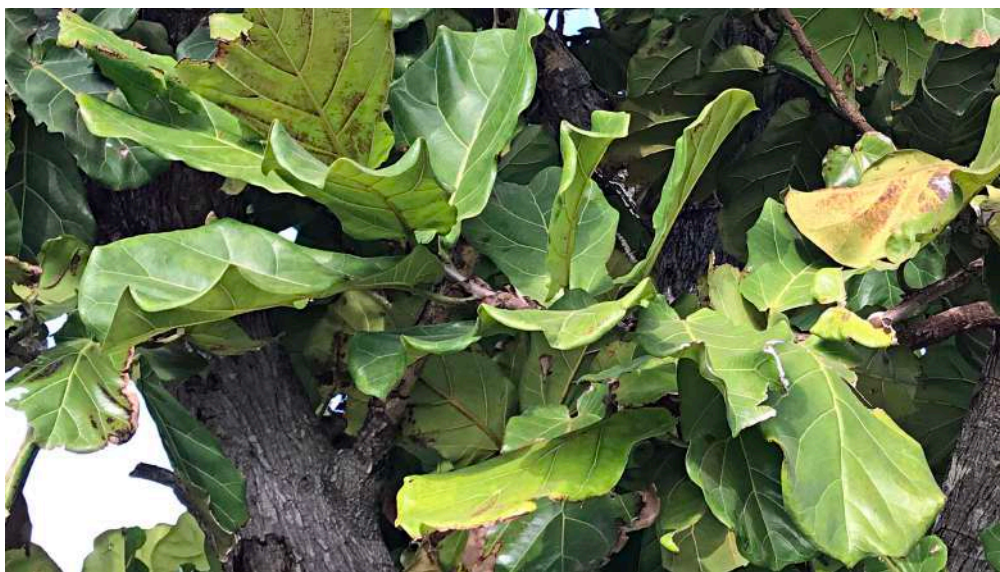
Crape Myrtle Pink (*Lagerstroemia indica*) A prominent row of trees defining the LHS
Gold 8 between tee-block and green.



Crape Myrtle White (*Lagerstroemia cv acoma*) A prominent flowering tree on the LHS Gold 8 between tee-block and green.



Fiddleleaf Fig (*Ficus lyrata*) A group of three trees planted on the LHS Green 9 fairway approaching the green, with close-up of leaves below.





Fiddlewood (*Citharexylum spinosum*) A small group of trees planted on the RHS Blue 1, with close-up of leaves & flower buds below.





Flame Tree (*Brachychiton acerifolius*) A January-flowering tree planted on the LHS Blue 9, with a close-up of flowers below.





Forest She-oak (*Allocasuarina torulosa*) A group of trees planted on the LHS Blue 4, with a close-up of cones below.





Golden Rain Tree (*Koelreuteria elegans*) A row of trees planted between Gold 2 and 3 fairways, with a close-up of flowers below.





Ivory Curl flower (*Buckinghamia calssissima*) A tree planted on the RHS of Gold 7 fairways, with a close-up of flowers below.





Jacaranda (*Jacaranda mimosiifolia*) A row of several trees between Blue 1 and 9 fairways, with a close-up of flowers below.

