

Indooroopilly Golf Club Natural History - Version 2

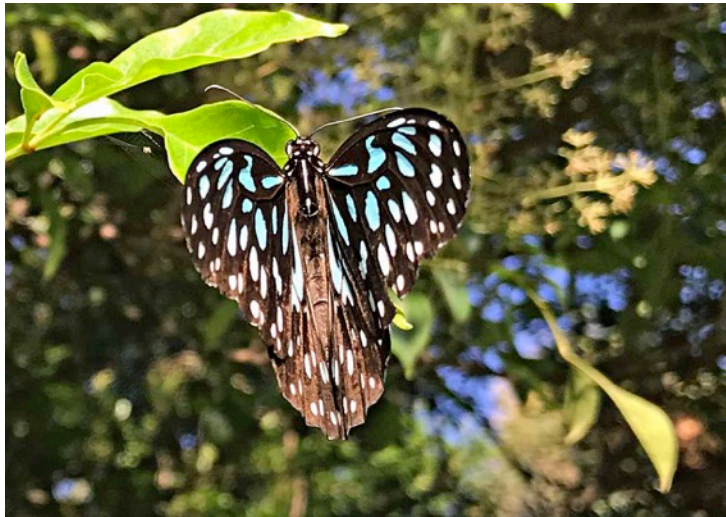
Butterflies (Lepidoptera) Listed by Common Name

Butterflies and Moths together make up the Order Lepidoptera, one part of the larger group of Insects. Most Butterflies fly during the day and most Moths at night. Observations of Moths have not been made by the authors to date, and this account is limited to the Butterflies. According to the Queensland Museum, there are about 180 species of Butterfly in Southeast Queensland. The 32 species listed here should be viewed as a work-in-progress and many other species are likely to be observed at IGC in the future.

These Butterflies are listed below in alphabetical order of Common names. Twenty-six listed species are also illustrated below, approximately in order of Common names. We are very grateful to Mr Jack B Wade (JBW), who has contributed 22 of these images and who has also assisted in their identification.

Images	Common name	Genus	species	Origin	Observations	Location on Golf Course
DH	Blue Tiger	<i>Tirumala</i>	<i>hamata</i>	SEQ native	September	Red 5 fairway; Green 5 fairway
JBW	Bright Cornelian	<i>Deudorix</i>	<i>diovis</i>	SEQ native	March	Male on Blue 3 fairway
JBW	Cabbage White	<i>Pieris</i>	<i>rapae</i>	SEQ native	November	various locations
JBW	Caper Gull	<i>Cepora</i>	<i>perimale</i>	SEQ native	March	various locations
JBW	Caper White	<i>Belenois</i>	<i>java</i>	SEQ native	November	Green 6 fairway
JBW	Chequered Swallowtail	<i>Papilio</i>	<i>demoleus</i>	SEQ native	April, Sep	Green 6, on <i>Melaleuca</i> flowers
JBW	Chrome Awl	<i>Hasora</i>	<i>chromus</i>	SEQ native	April	near Workshops
DH	Clearwing Swallowtail	<i>Cressida</i>	<i>cressida</i>	SEQ native	September	Green 6 fairway
DH	Common Crow	<i>Euploea</i>	<i>core</i>	SEQ native	October	Red 2 fairway
JBW	Common Grass Blue	<i>Zizinia</i>	<i>labradus</i>	SEQ native	March	Green 6 temporary tee
JBW	Dainty Grass Blue	<i>Zizula</i>	<i>hylax</i>	SEQ native	October	temp Green 6 tee
JBW	Dainty Swallowtail	<i>Papilio</i>	<i>anactus</i>	SEQ native	March, April	March on <i>Pavetta australiensis</i>
JBW	Evening Brown	<i>Melanitis</i>	<i>leda</i>	SEQ native	October	Green 3 tee
JBW	Glasswing Brown	<i>Acraea</i>	<i>andromacha</i>	SEQ native	April	Green 4 fairway

no image	Large Grass-Yellow	<i>Eurema</i>	<i>hecabe</i>	SEQ native	tbc	tbc
no image	Leafwing	<i>Dolleschallia</i>	<i>bisaltide</i>	SEQ native	October	Green 7 tee; Gold 6
JBW	Lemon Migrant dark	<i>Catopsila</i>	<i>pomona</i>	SEQ native	September	various locations
DH	Lemon Migrant light	<i>Catopsila</i>	<i>pomona</i>	SEQ native	September	Gold 4 fairway
no image	Lesser Wanderer	<i>Danaus</i>	<i>chrisippus</i>	SEQ native	March	near Clubhouse
JW	Meadow Argus	<i>Junonia</i>	<i>villida</i>	SEQ native	September	Gold 7 fairway; Gold 1
no image	Monarch	<i>Danaus</i>	<i>plexippus</i>	SEQ native	September	Blue 5 fairway
	No Brand Grass					
JBW	Yellow	<i>Eurema</i>	<i>brigitta</i>	SEQ native	November	various locations
no image	Orange Ochra	<i>Trapezites</i>	<i>eliena</i>	SEQ native	September	Red 2 tee
JBW	Orchard Swallowtail	<i>Papilio</i>	<i>aegaeus</i>	SEQ native	November	Gold 5 fairway
JBW	Plumbago Blue	<i>Leptotes</i>	<i>plinius</i>	SEQ native	November	Gold 9 tee
no image	Scarlet Jezebel	<i>Delias</i>	<i>argenthona</i>	SEQ native	April	near Clubhouse
	Small Green-banded					
JBW	Blue	<i>Psychonotis</i>	<i>cailius</i>	SEQ native	April	Adjacent Green 4 fairway
JBW	Trident Pencil Blue	<i>Caandalidies</i>	<i>gilberti</i>	SEQ native	March	Adjacent Blue 3 fairway
JBW	Varied Eggfly	<i>Hypolimnas</i>	<i>bolina</i>	SEQ native	March	various locations
	White-brand Grass					
JBW	Dart	<i>Suniana</i>	<i>sunias</i>	SEQ native	March	Adjacent Green 3 fairway
	White-banded Line					
JBW	Blue	<i>Nacaduba</i>	<i>kurava</i>	SEQ native	March	Adjacent Blue 3 fairway
JBW	White-banded Plane	<i>Phaedyman</i>	<i>shepherdi</i>	SEQ native	May; Sep	near clubhouse; Gold 4 fairway
	26 species					
32	Total species	with images				



Blue Tiger above wing (*Tirumala hamata*)



Blue Tiger below wing (*Tirumala hamata*) (JBW)



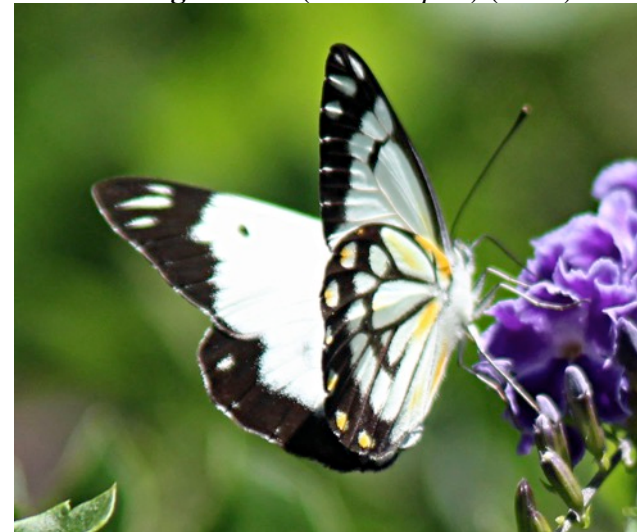
Bright Cornelian (*Deudorix diovis*) (JBW)



Cabbage White (*Pieris rapae*) (JBW)



Caper Gull (*Cepora perimale*) (JBW)



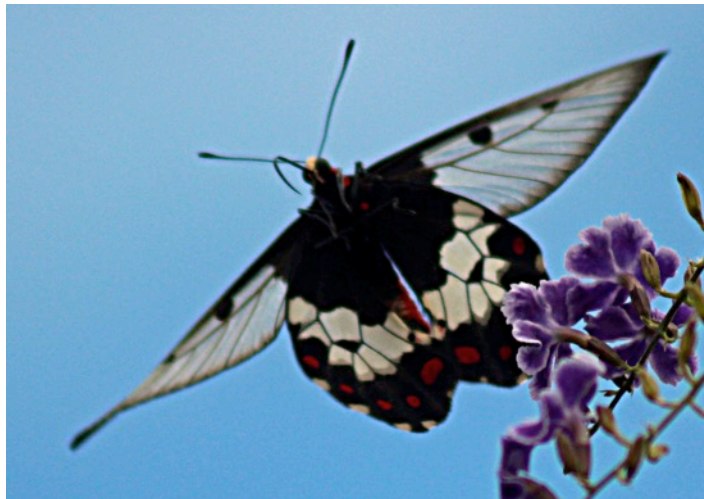
Caper White (*Belenois java*) (JBW)



Chequered Swallowtail (*Papilio demoleus*)



Chrome Awl (*Hasora chromus*) (JBW)



Clearwing Swallowtail (*Cressida cressida*) Flying view (JBW)



Clearwing Swallowtail (*Cressida cressida*) Perching view (JBW)



Common Crow (*Euploea core*)



Common Grass Blue (*Zizinia labradus*) (JBW)



Dainty Grass Blue (*Zizula hylax*) (JBW)



Evening Brown (*Melanitis leda*) (JBW)



Dainty Swallowtail (*Papilio anactus*) Overwing view (JBW)



Dainty Swallowtail (*Papilio anactus*) Underwing view (JBW)



Glasswing Brown (*Acraea andromacha*) (JBW)



Meadow Argus (*Junonia vallida*) (JBW)



Lemon Migrant dark (*Catopsila pomona*) (JBW)



Lemon Migrant light (*Catopsila pomona*)



No-brand Grass Yellow (*Eurema brigitta*)



Orchard Swallowtail (*Papilio aegaeus*) (JBW)



Plumbago Blue (*Leptotes plinius*) (JBW)



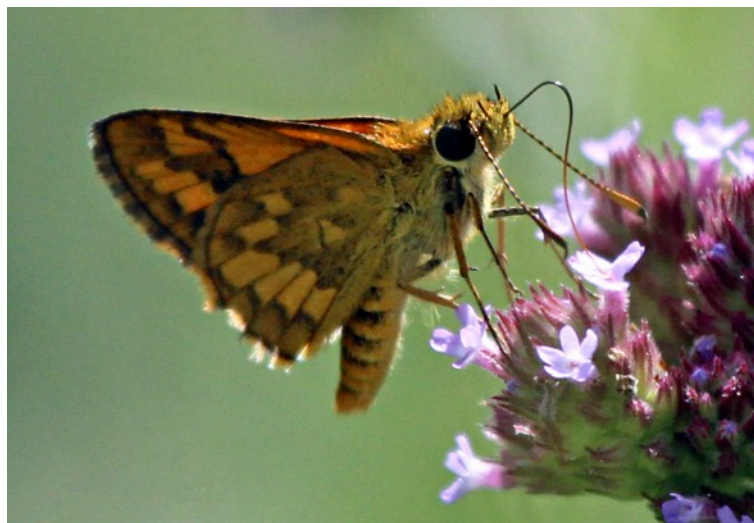
Small Green-banded Blue (*Psychonotis cailius*) (JBW)



Trident Pencil Blue (*Caandilidies giberti*) (JBW)



White-banded Line Blue (*Nacaduba kurava*) (JBW)



White Brand Grass Dart (*Suniana sunias*) (JBW)



White-banded Plane (*Phaedyra shepherdii*) (JBW)



Varied Eggfly female above wing (*Hypolimnys bolina*)(JBW)



Varied Eggfly female below wing (*Hypolimnys bolina*) (JBW)



Varied Eggfly male below wing (*Hypolimnastheolus bolina*) (JBW)



Varied Eggfly male above wing (*Hypolimnastheolus bolina*) (JBW)